



DRILLING LOG



FROM :(mt) 1400

TO :(mt) 2850

SCALE : 1/ 1000

Well Name : BMA A19A

Company : ESSO AUSTRALIA

Country : AUSTRALIA

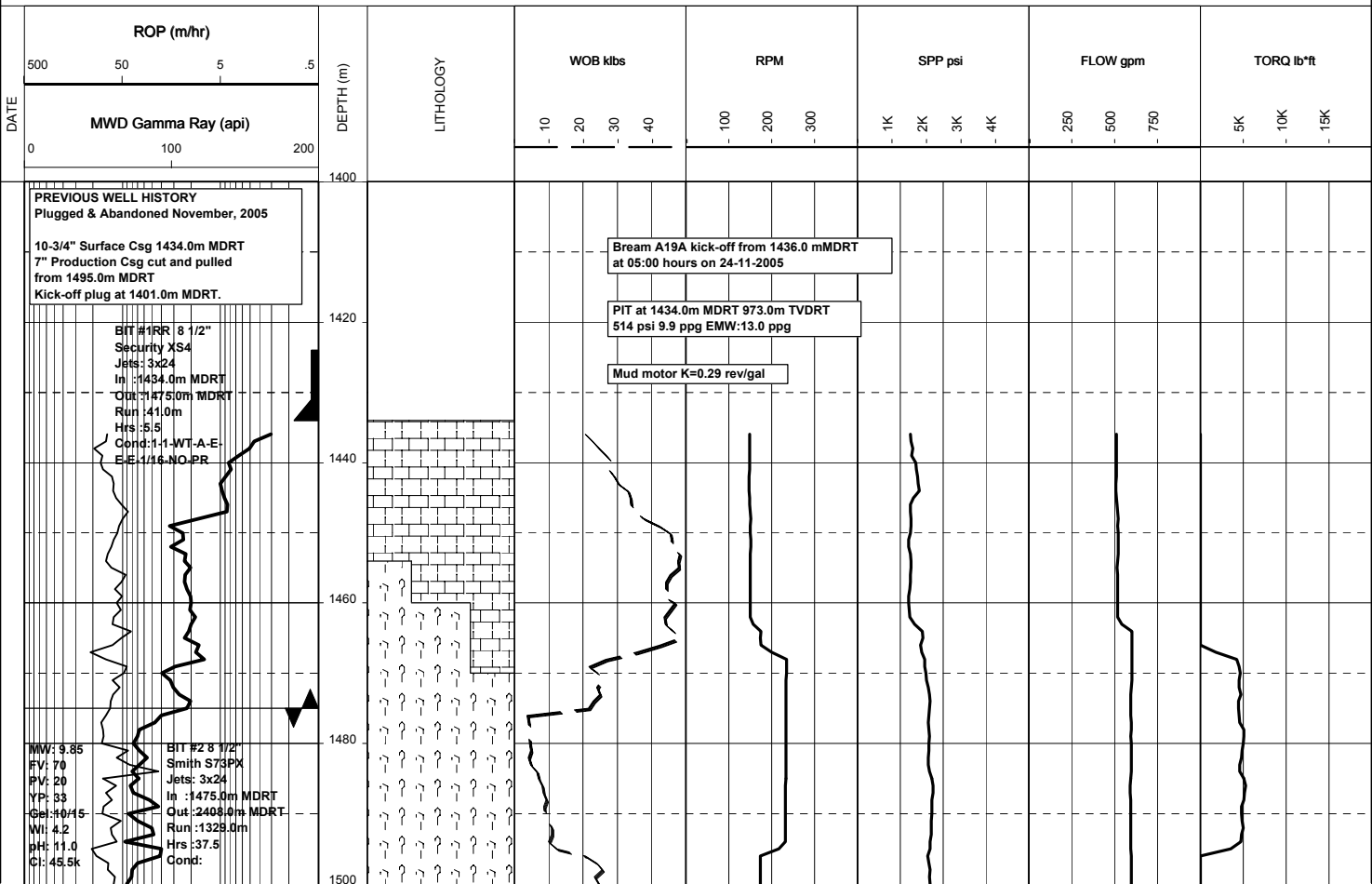
RT-MSL : 32.82m

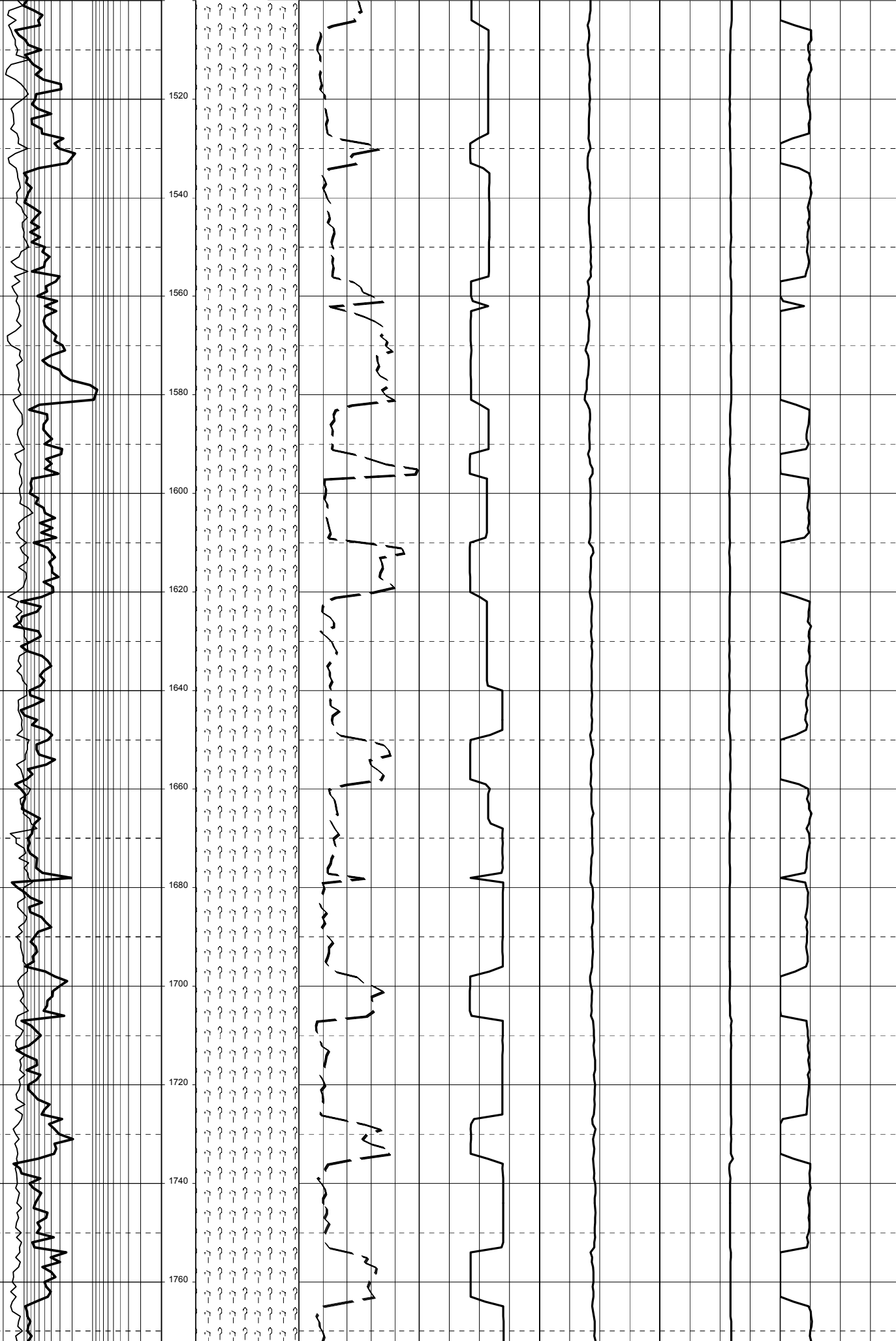
Final TD : 2804.0m

RT-SEABED : 92.22m

Final TVD : 2020.94m

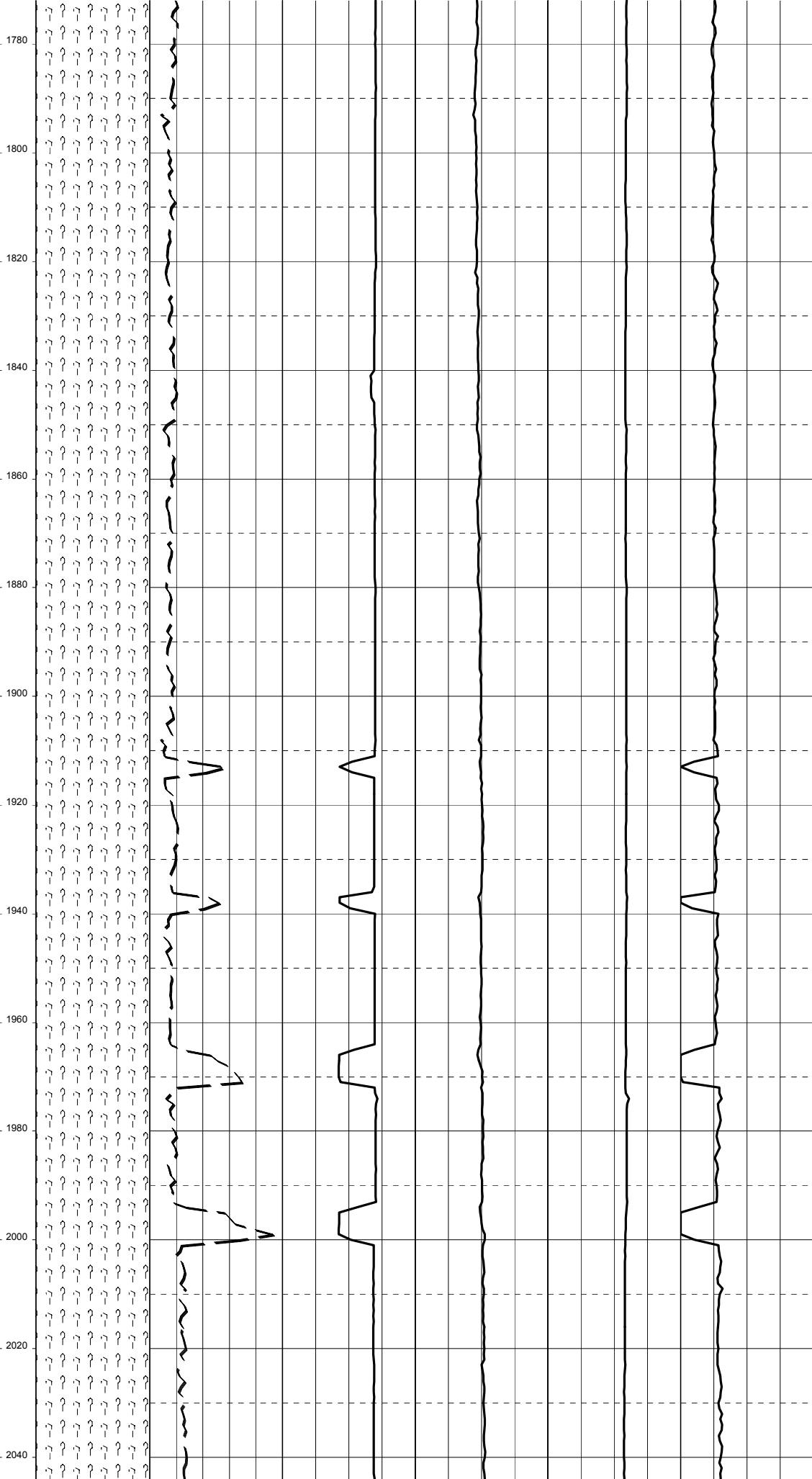
Generated by ALS Package

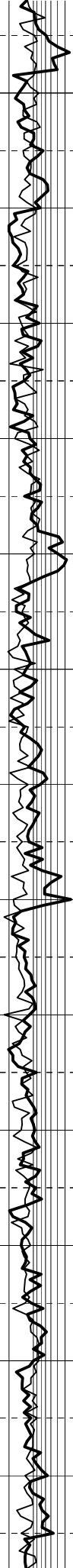




26-11-05

NW: 9.90
FV: 69
PV: 26
YF: 42
Gel: 11/19
Wt: 2.9
pH: 8.9
Cl: 46k

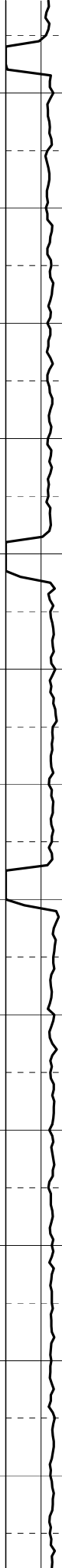




2060
2080
2100
2120
2140
2160
2180
2200
2220
2240
2260
2280
2300

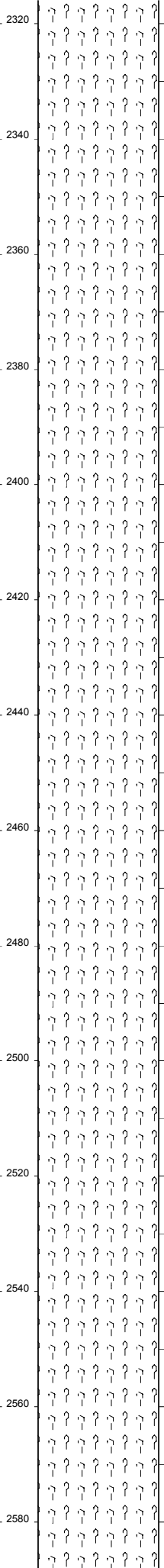
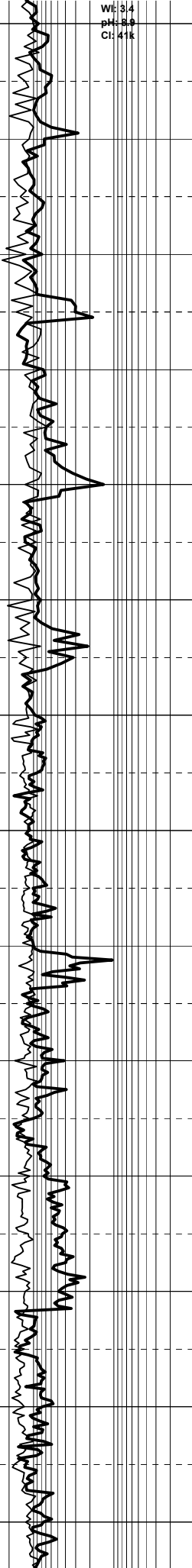


Handwritten annotations in the center of the grid, including a large '1' at the top and several 'W' characters with vertical lines extending downwards, possibly indicating specific data points or features.

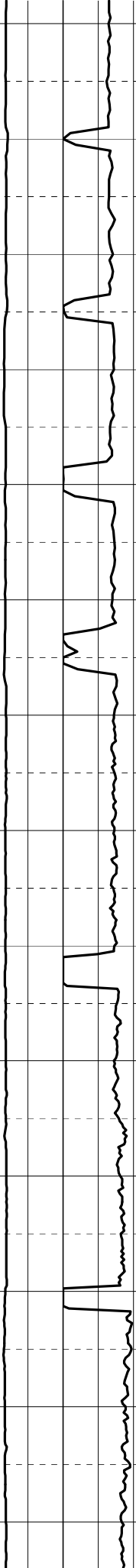
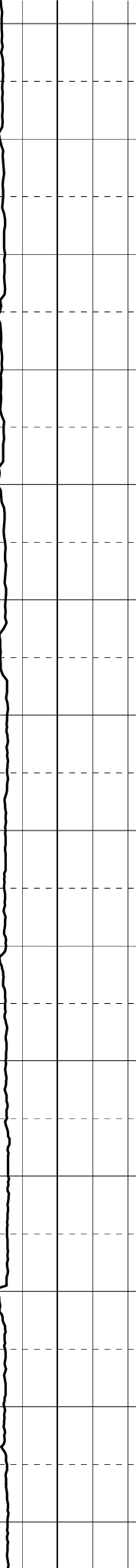
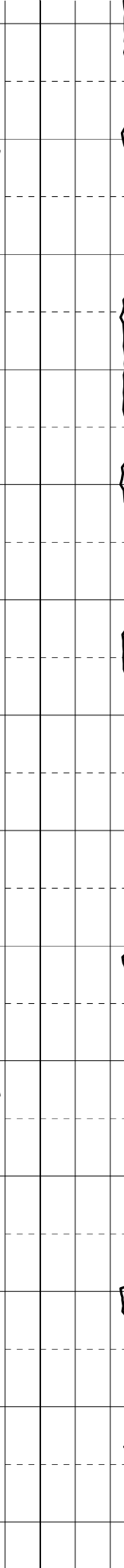
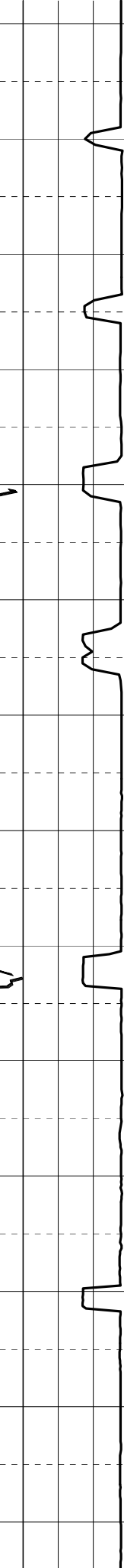


MW: 9.90
FV: 66
PV: 25
YP: 41
Gel: 12/21

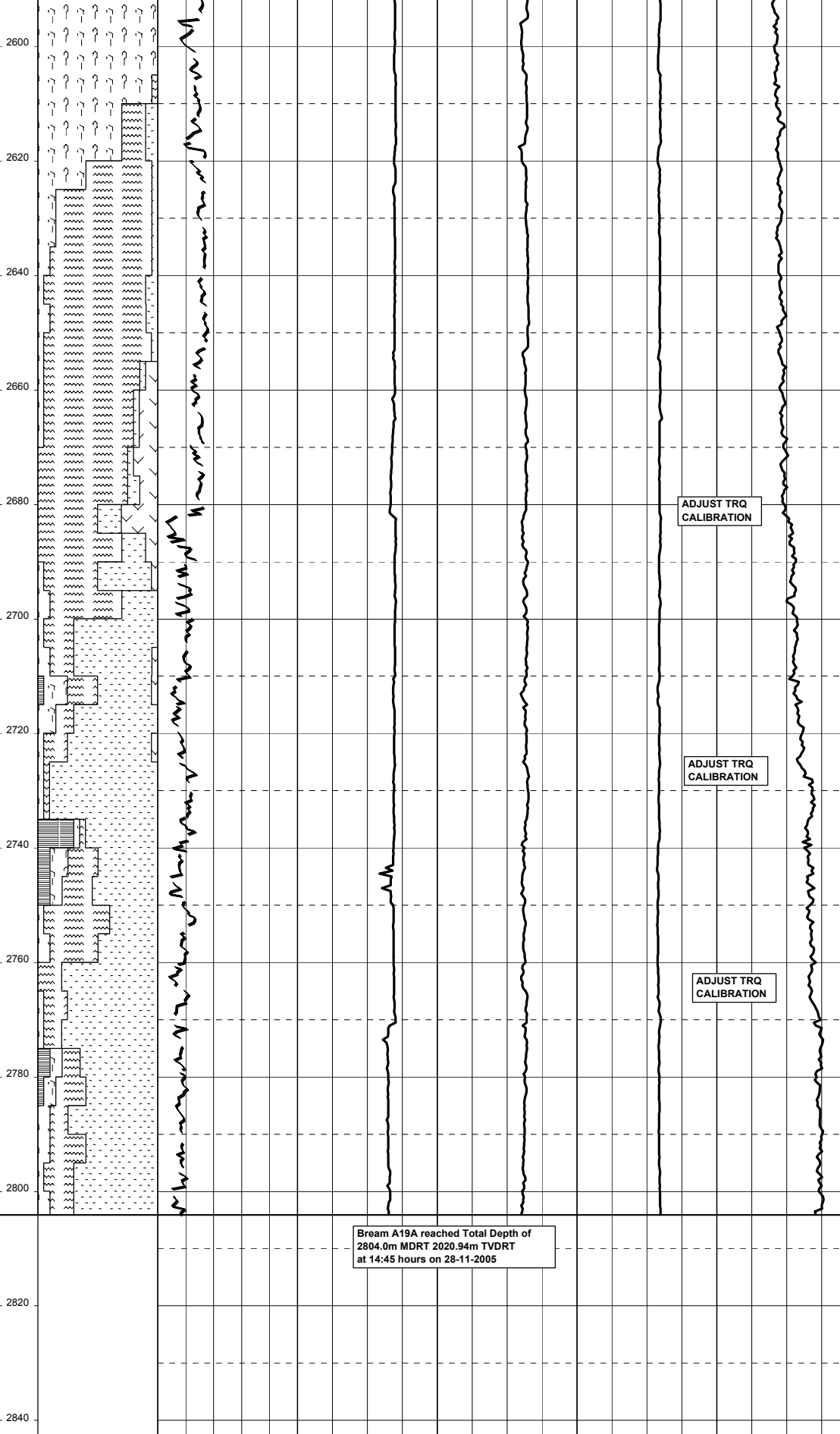
Wt: 3.4
pH: 8.8
Cl: 41k



Handwritten notes in the center of the grid, including arrows pointing to specific features and some illegible text.



MW: 10.10
FV: 72
PV: 27
YP: 42
Gel: 14/22
Wt: 3.2
pH: 8.9
Cl: 43k



ADJUST TRQ CALIBRATION

ADJUST TRQ CALIBRATION

ADJUST TRQ CALIBRATION

Bream A19A reached Total Depth of
2804.0m MDRT 2020.94m TVDRT
at 14:45 hours on 28-11-2005